

# PUGLIA



www.shutterstock.com · 54233860

Olive-tree.



www.shutterstock.com · 45314161

Giovinazzo (Bari), Southern Italy



www.shutterstock.com · 36053239

Alberobello was founded in the 15th century. A typical feature of Alberobello are the trulli, white dry-stone houses with conical roofs made of lapidary stones.

# In the north of Puglia







**Santa Maria  
di Leuca:  
De finibus terrae  
the end of the land**

**The south of Puglia**



**Ostuni the white city**



**Ruvo di Puglia**



**Castel del monte**



**The center of Puglia**



**BARI, the capital city**

# RUVO DI PUGLIA







Disegno di Antonio Portogheri

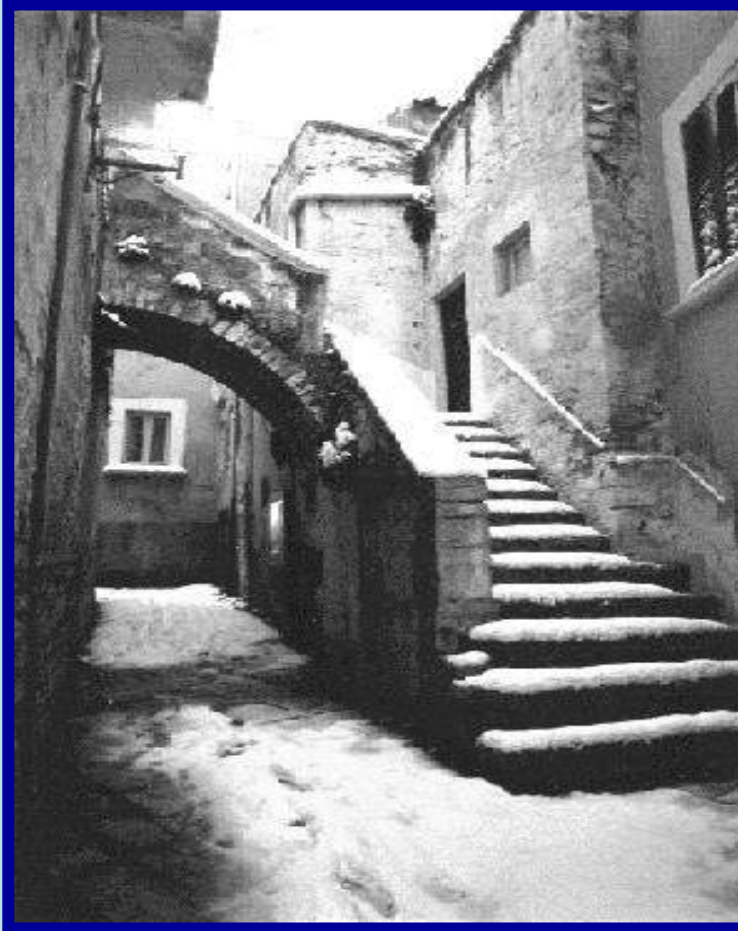


Ruvo is a very ancient city. It lies on a hill between the Adria sea and the mountains.



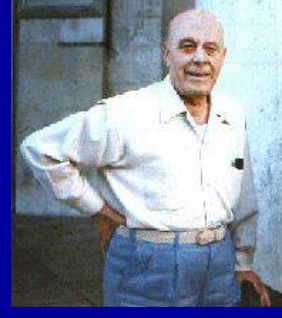
Trulli are called the typical houses of our region

# IMAGES FROM RUVO





# Pictures by DOMENICO CANTATORE



OUR MOST FAMOUS PAINTER

# OUR TYPICAL FOOD



focaccia

Cicorie and favetta





# CALZONE WITH ONIONS AND STRASCINATI WITH VEGETABLES



# **OUR THREE PRIMARY SCHOOLS**



**SAN GIOVANNI BOSCO**

**VIA DELL' AQUILA**



**BARTOLO DI TERLIZZI**







# OUR ACTIVITIES

G

BYE

R

O

U

The PUPILS of S.G. BOSCO  
PRIMARY SCHOOL

O

V

from

D

O